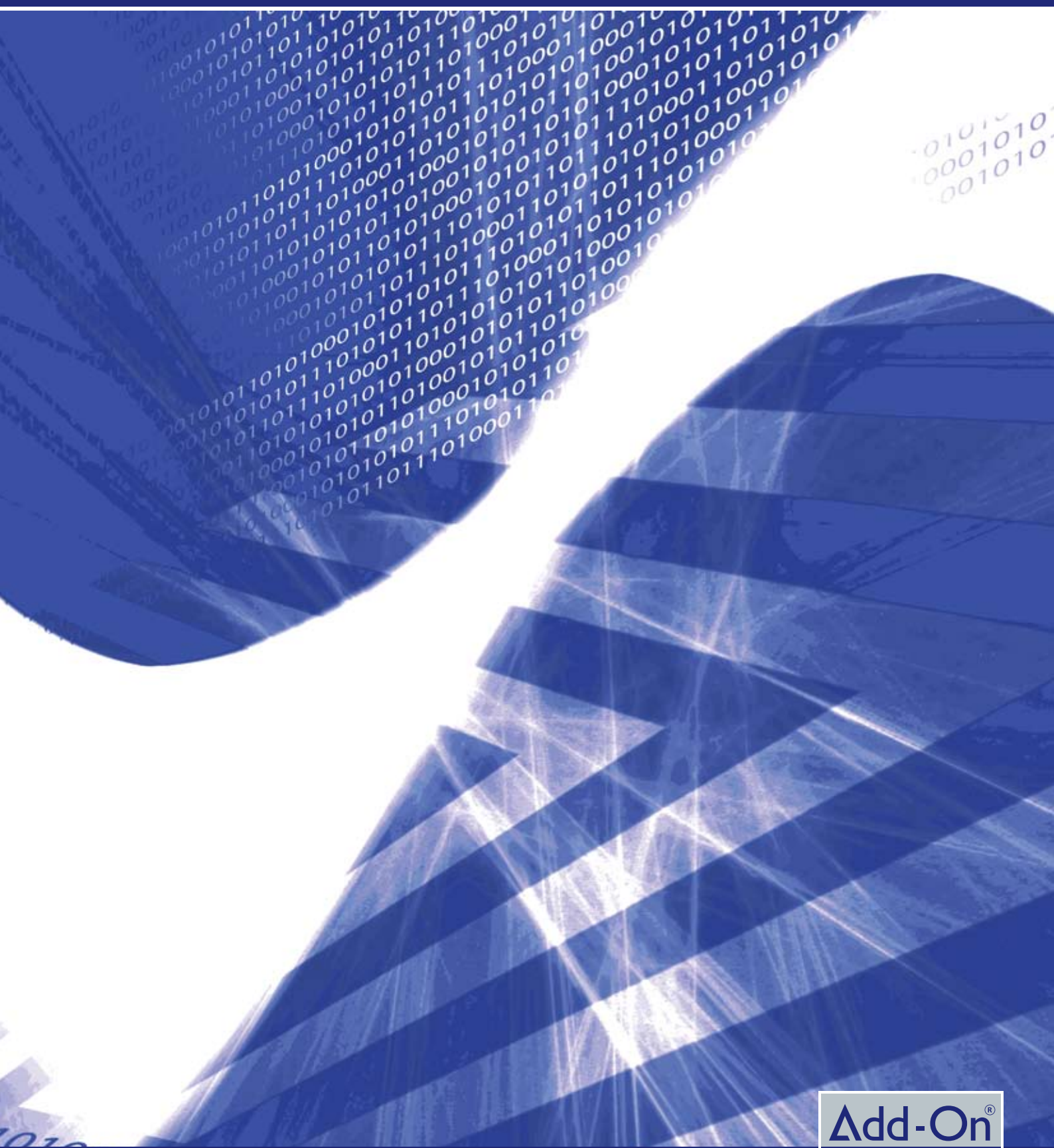


Digital signage software solutions



■ Digital signage software solutions

designed in cooperation with Modulex, one of the world's leading producers of information and communication systems

developed by Add-On Products, one of the world's leading producers of add-ons for the Microsoft platform

dynamic digital signage solutions for today's changing environments

A solution for every need

An investment in digital signage will provide you with much more than just improved communication.

Different customers require different solutions - Add-On Products delivers software solutions for all; Starting with our entry solution; Facility View - which provides current and future meeting listings on conference room screens (e-signs). These listings of meetings are based on information directly from Microsoft Outlook® calendars which again are stored on a Microsoft Exchange server.

Customers may require a professional multimedia solution such as Ariadne, which handles everything from meeting information to flash presentations, messaging, video, welcoming visitors etc. Ariadne easily and effectively manages digital signage in order to improve your organizations efficiency, general image and communication level.

Finally other customers may desire a full resource management system coupled with multimedia and informational displays such as Resource Central.

We at Add-On Products, are one of the leading specialists in resource management solutions based on Microsoft technology. We connect Modulex signage to our Resource Central solution in a very simple, intuitive and easy way. Resource Central handles meetings in less than 2 minutes from within Microsoft Outlook®, including the overview and selection of meeting rooms and the ordering of extra services such as catering, AV-equipment, e-signage information, table arrangement, cost-center etc.

Let us help you in finding the right solution!

Facility View

The fastest way to a high quality digital signage system.

Facility View is a digital signage system for meeting rooms and offices, so people can see which meetings or activities are taking place currently as well as for the rest of the day.

Meetings are a daily necessity for many businesses and being disturbed while having meetings with business partners and colleagues can be frustrating. Facility View eliminates those inconvenient incidents by allowing users to see which meeting facilities are available via digital signs. No more "Sorry, but I thought it was available" situations.

The concept consists of

- Facility View module real-time software that links Microsoft Outlook® meeting subject information to screens
- Modulex's high quality 10" screens in an exclusive design

Installation is a simple plug and view process and price is attractive compared to other digital solutions.



Ariadne

Dynamic signage, resource management and communication: The powerful multimedia solution to manage any needs in any environment.

Ariadne easily and effectively manages digital signage in order to improve your organizations efficiency and image. Use Ariadne to keep your visitors and staff informed, with instant messages and up-to-date information throughout the day. Entertain and reach your customers with streaming videos or company presentations and keep them updated with the latest news.

From the time employees and visitors enter your building until the moment they leave; Ariadne effectively manages the digital signs so everyone feels informed, welcome and at ease. Ariadne allows you to promote your company's products while giving the customers a positive and professional image of your organization.

With Ariadne you get increased reception efficiency, improved branding and promotion, increased customer satisfaction with wayfinding functionality, improved internal and external communication and the most up to date meeting, news and visitor information. Ariadne is available either installed onsite or hosted by Add-On Products.

Welcome and guide your visitors from the moment they walk in the door. Enter meeting information directly into Ariadne or automatically display meeting information including directions, subject and special messages from Outlook, Resource Central or any other third party software.

Display webpages, flash animations, tv and other media types. Schedule in advance or update in realtime.

Update your displays in realtime to show special events. Have an event you didn't know about in advance? Simply select where you would like the message and graphics to appear and how long you would like them to be visible. It's that easy!

Display RSS feeds such as news or traffic alerts or send messages regarding important meetings, etc.



Resource Central

The Microsoft Outlook® booking solution that increases meeting efficiency and handles all needed services such as catering and signage in less than 2 minutes.

Complete meeting arrangements in less than 2 minutes

Managing requests for associated services, such as catering, table arrangements etc. usually consumes more time than desired for both users and facilities.

With Resource Central for Microsoft Outlook® it takes less than 2 minutes:

- **List & book available conference rooms, hot desks, cars etc.**
- **Order individualized catering and other services**
- **Display electronic information in the reception area or by meeting rooms**
- **Register and print badges for external guests**
- **Service providers instantly receive orders**

Resource Central is your ideal partner when planning and organizing meetings - both internal and external - because it allows users to overview and book associated services for the individual resource just by using Microsoft Outlook®.

A customer's internal study found the total time spent arranging a meeting including ordering of additional services to be between 7-12 minutes. The customer afterwards implemented Resource Central to book:

- 300 resources, multiple locations
- 600 meetings a day requiring additional services

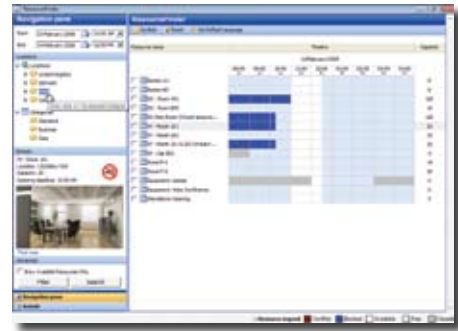
After implementation of Resource Central the customer now saves a minimum of 5 minutes per meeting. It adds up to 50 hours per day!

How many hours are you able to save per day?

How to succeed in just a few steps

Imagine a user working within Microsoft Outlook®

1



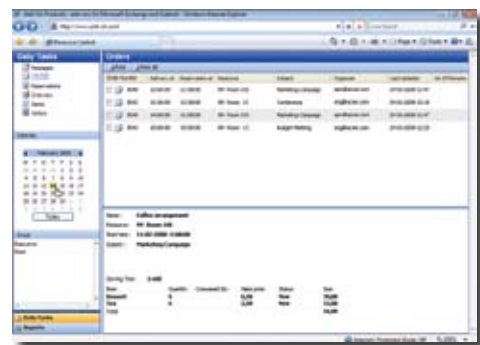
In the Outlook® meeting request:
Search for and book available resources with ResourceFinder

2



'One stop' order form:
Order all services in one place and notify all service providers automatically

3



Service provider overview:
Service providers can view/print daily orders and reports through the web browser

If you'd like to see how Resource Central works just email info@add-on.com and ask for a 20 minute online demo. Demos are led by one of our experienced consultants who will be able to answer all your questions.

3 solutions & combinations

If you need:

Outlook meeting information 'subject' automatically displayed on standard meeting room signs, informing about current and future bookings.

Facility View

If you need:

Microsoft Outlook® booking solution providing resource reservations, ordering of catering, e-sign, table arrangement, AV-equipment, hot-desk management and invoice processing in less than 2 minutes.

Resource Central

If you need:

Multimedia center managing indoor environments, adding wayfinding, visitor welcome, multimedia, messaging, event listing and manual room booking from central point.

Ariadne

	Facility View	Ariadne	Resource Central	Resource Central & Ariadne
SIGNAGE / MEETING ROOMS				
Plain text (no graphic images)	☑		☑	
Rich graphics (images and branding)		☑		☑
Room availability	☑	☑	☑	☑
Current meeting subject	☑	☑	☑	☑
Meeting organizer	☑	☑	☑	☑
Upcoming meeting subjects	☑	☑	☑	☑
Company/guest logo		☑		☑
Message / RSS field		☑		☑
Background/foreground images		☑		☑
SIGNAGE / RECEPTION				
Wayfinding		☑		☑
Multimedia video/flash		☑		☑
Visitor Welcome		☑		☑
Message / RSS field		☑		☑
Event listing		☑		☑
ROOM AND RESOURCE BOOKING				
Meeting room management		☑	☑	☑
Hot desk management			☑	☑
Catering order forms			☑	☑
Table arrangement / facilities			☑	☑
Guest registration			☑	☑
Customizable order forms			☑	☑
Customizable reporting			☑	☑
Integration with invoicing systems			☑	☑
IT / Equipment order forms			☑	☑
MESSAGING INTEGRATION				
Microsoft Outlook®	☑	☑ *	☑	☑
Lotus Notes		☑ *		
Custom interface		☑ *		
* additional fee				



Hardware

Modulex hardware - high quality and exclusive design.

Add-On Products recommends Modulex hardware for our software solutions. Key advantages includes:

- Engineered to run 24/7, but minimum 4 hours powersafe is recommended for lifetime and environmental reasons
- Elegant design with a front panel available in 3000 colours with static text options
- 2 years guarantee and maintenance agreement offered by Modulex (optional)

Modulex has more than 10 years experience within digital signage and more than 40 years of experience within architectural signage.

The hardware assortment covers all needs for a digital solution in most environments. Displays range from 10" to 46", can be installed both in landscape and portrait mode, and because of the unique design the panel can be mounted directly on the wall or be recessed into the wall. The assortment also includes monoliths.

All specifications and installation guides can be downloaded from our partner's web site www.modulex.com.



www.add-on.com